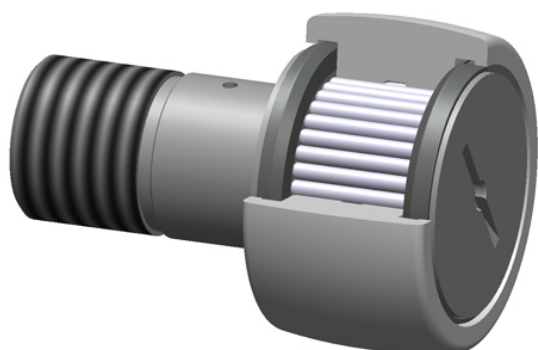




Barden BEARING LTD



PCI Procal Inc. HCCF-2.25-S Crowned & Flat Cam Followers Bearings

Bearing No. HCCF-2.25-S

roller diameter:	2.2500 in
closure type:	Sealed
roller width:	1.2500 in
head type:	Slotted
stud diameter:	1.2500 in
thread size:	1-1/8-12
stud length:	2.0000 in
radial dynamic load capacity:	8090 lbs
roller shape:	Crowned
radial static load capacity:	21140 lbs
roller material:	Chrome Steel
technical specifications:	Click here
bearing element:	Needle Rollers

HCCF-2.25-S Bearing 2D drawings and 3D CAD models